



Jack Taggart & Co

RESIDENTIAL SALES AND LETTINGS



OFFERS IN EXCESS OF

**£800,000**

**Sandringham Close**

Hove, BN3 6XE



## PROPERTY SUMMARY

OIEO £800,000

An exceptional and beautifully extended 1930s semi-detached residence, distinguished by its charming mock-Tudor façade, private off-street parking for two vehicles and striking kerb appeal, quietly positioned within an exclusive residential close. The welcoming entrance hall immediately sets the standard for the home — generous in scale and thoughtfully designed for modern family living, with ample space for everyday essentials.

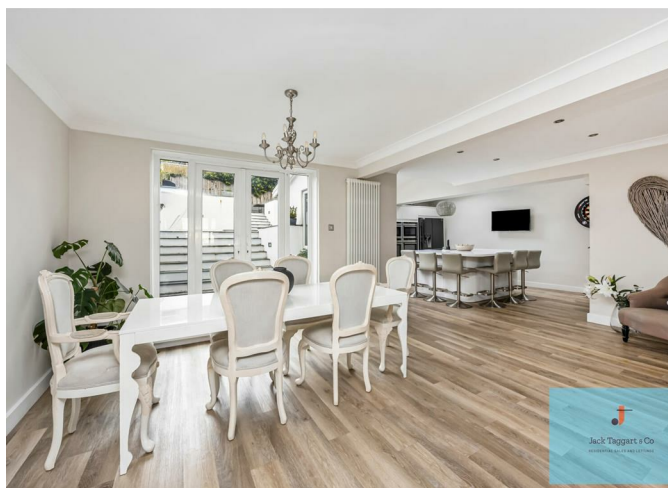
4



2

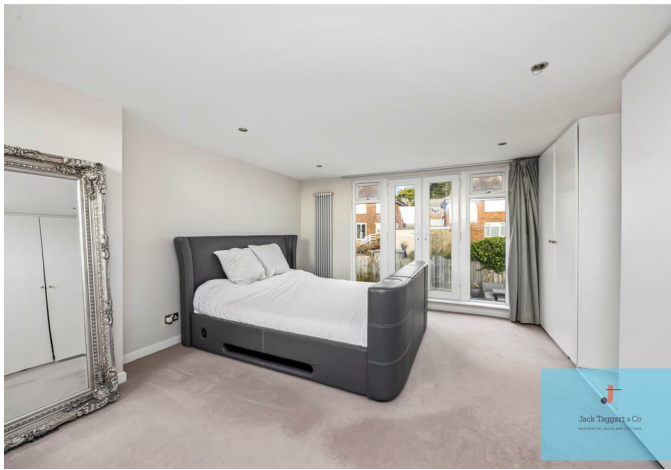


1

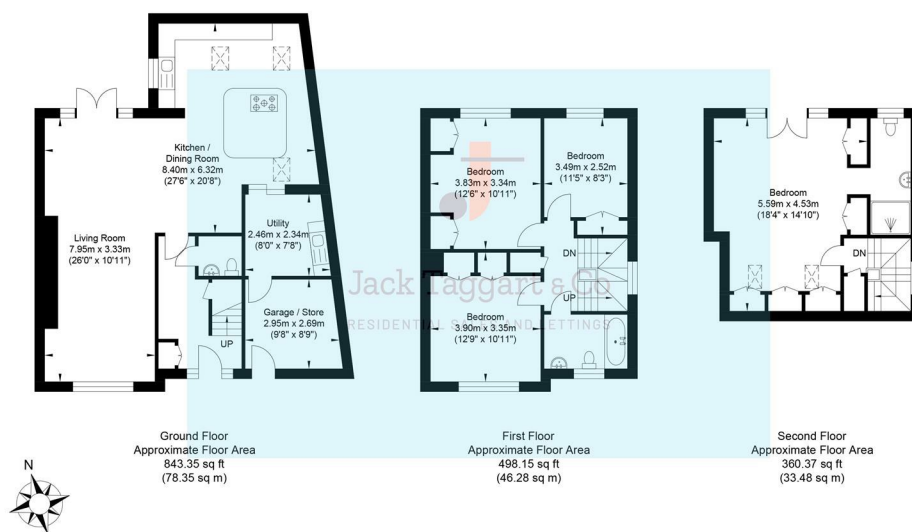




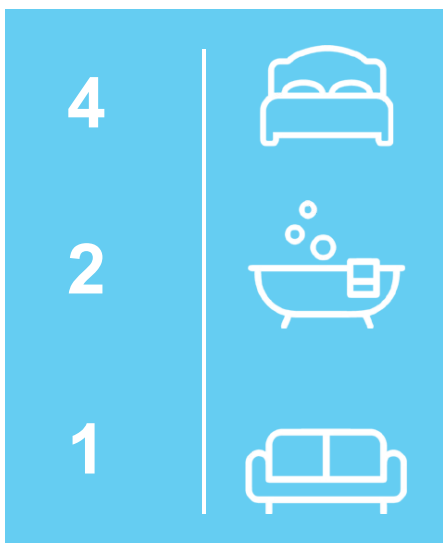




## Sandringham Close



Approximate Gross Internal Area (Including Garage) = 158.11 sq m / 1701.87 sq ft  
Illustration for identification purposes only, measurements are approximate, not to scale.



Energy Efficiency Rating		
	Current	Potential
Very energy efficient - lower running costs		
(92 plus) <b>A</b>		
(81-91) <b>B</b>		
(69-80) <b>C</b>		
(55-68) <b>D</b>		
(39-54) <b>E</b>		
(21-38) <b>F</b>		
(1-20) <b>G</b>		
Not energy efficient - higher running costs		
<b>England &amp; Wales</b>	EU Directive 2002/91/EC	

Agents Note: Whilst every care has been taken to prepare these particulars, they are for guidance purposes only. All measurements are approximate and are for general guidance purposes only and whilst every care has been taken to ensure their accuracy, they should not be relied upon and potential buyers/tenants are advised to recheck the measurements



**OFFICE ADDRESS**  
55 Queen Victoria  
Avenue  
BN3 6XA

**OFFICE DETAILS**  
01273 974929  
sales@jacktaggart.co.uk